



The Premium Pocket Door Solution



Distributed by



an **S B P** brand

Pocket Frame Systems

The CS Cavity Slider™ is a practical solution for those areas where there is not enough space for a swinging door.

In addition to its space saving attributes in restrooms, hallways, and laundries, it can be used with confidence for architectural feature openings around your project.

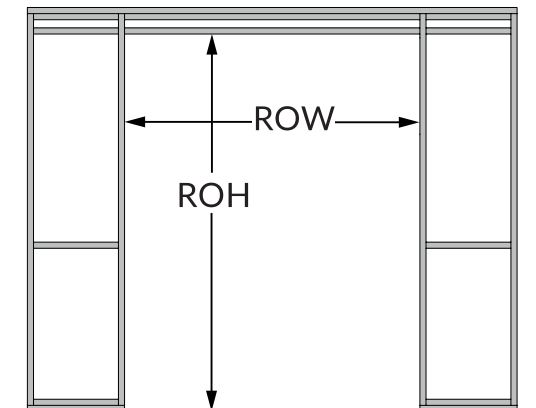
Features

- Structurally robust due to its construction from aluminum extrusions
- Easy to assemble and install
- Available for 2x4 and 2x6 framing
- Can be cut down to size on site
- Suitable for residential and commercial projects (meets Type 1 construction code without any combustible materials)

Rough Opening

DH - Door Height DW - Door Width

Dimension	Inches
RO Height	DH + 4-1/4"
RO Width Single	(DW x 2) + 2"
RO Width Bi-Parting	(DW x 4) + 2"



How to Order

1. Choose Framing and Door Size

Frames can be cut down on site to maximize size for each model:

Framing	CS SKU	Max Door Size	
		Inches	Millimeter
4" Framing (2x4 Stud)*	CSS4K2068	2'0" x 6'8"	610 x 2032 mm
	CSS4K2668	2'6" x 6'8"	762 x 2032 mm
	CSS4K2868	2'8" x 6'8"	813 x 2032 mm
	CSS4K2680	2'6" x 8'0"	762 x 2438 mm
	CSS4K2880	2'8" x 8'0"	813 x 2438 mm
	CSS4K3068	3'0" x 6'8"	914 x 2032 mm
	CSS4K3080	3'0" x 8'0"	914 x 2438 mm
	CSS4K4080	4'0" x 8'0"	1219 x 2438 mm
6" Framing (2x6 Stud)	CSU6K2680	2'6" x 8'0"	762 x 2438 mm
	CSU6K3080	3'0" x 8'0"	914 x 2438 mm
	CSU6K4080	4'0" x 8'0"	1219 x 2438 mm
	CSU6K3090	3'0" x 9'0"	914 x 2743 mm
	CSU6K4090	4'0" x 9'0"	1219 x 2743 mm
	CSU6K30100	3'0" x 10'0"	914 x 3048 mm
	CSU6K40100	4'0" x 10'0"	1219 x 3048 mm
	CSU6K50100	5'0" x 10'0"	1524 x 3048 mm

2. Choose a Carriage Pack (one per door)

Includes: Carriages, mounting plates, T-Guide, fixing screws, and adjusting wrench

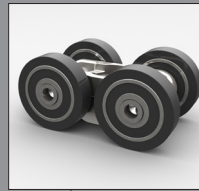
Carriage Pack Type	CS SKU
Standard M6 (200lb/90kg)	DKM0611
Standard M8 (500lb/240kg)	DKM0811
CS SofStop Single Action Door Weight: 0-200 lb (90kg) Min Door Width 1 Stop: 26" (660mm)	DKS0511
CS SofStop Twin Action Door Weight: 0-200 lb (90kg) Min Door Width 1 Stop: 26" (660mm)	DKS0711
CS SofStop HD Twin Action Door Weight: 0-350 lb (160kg) Min Door Width 1 Stop: 29" (737mm)	DKS0811

3. For 2x4 Stud Frames up to 8', choose your CS Jamb Kit

Includes: Head jambs, split jambs, closing jamb, and fixing screws

Door Size	Jamb Size	Door Thickness	Product SKU
3'0" x 8'0"	4-9/16"	1-3/8"	JK4SW3080-138-4916
		1-3/4"	JK4SW3080-134-4916
	4-7/8"	1-3/8"	JK4SW3080-138-478
		1-3/4"	JK4SW3080-134-478
4'0" x 8'0"	4-9/16"	1-3/4"	JK4SW4080-134-4916
	4-7/8"	1-3/4"	JK4SW4080-134-478

CS Cavity Slider® Features with CS Jamb Kit™



Smooth running carriages with encased ball bearings. Up to 500 lb (240 kg) capacity

SofStop Soft Close/Soft Open also available



Corner joining brackets ensure precise right angled assembly

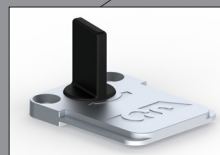


T-joining brackets for easy assembly of slats to split jambs & back stud

Strong aluminum frame complies with Type 1 Construction

Bottom plate assembly

Adjustable T-Guide

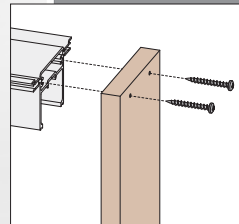


Head jambs designed for serviceability

Split Jambs and slats use hollow core technology for superior rigidity

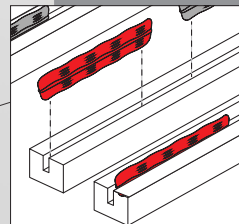
Horizontal slats for added strength

3/4" jamb thickness



Pre-drilled closing jamb for seamless attachment to track profile

Can be easily cut down on site for custom door sizes



Pre-grooved for Trim Clips for quick & easy installation

Door Thickness

1-3/8" to 1-3/4"
2x4 Stud

1-3/8" to 2-1/4"
2x6 Stud



2x4



2x6

Extruded aluminum track incorporated into head unit

Compatible with 4" and 6" stud sizes

Stain-grade poplar prepared and ready for paint

Patent Pending



Cycle tested 1 million openings



ADA Compliant



Available with SofStop®



Single or Bi-Parting units



Maximum door weight

Learn More



CS Track Systems and Hardware for Sliding Doors

CS TopMountTrack

Low profile track system suitable for incorporating into pocket door frame assemblies.



Design Features & Options

- Track is made from high-quality, heavy duty extruded aluminum
- Track is notched for simple carriage insertion
- Track can be configured to suit bi-parting or corner meeting door setups
- Available in Single, Double, and Triple Tracks for both 1-3/8" (35 mm) and 1-3/4" (45 mm) thick doors.
- Compatible with standard and soft close carriages

Description	Length	CS SKU
CS TopMountTrack - Single Clear Anodized	6 ft	CT6-NA
	8 ft	CT8-NA
	12 ft	CT12-NA
CS TopMountTrack - Single Black Anodized	6 ft	CT6-BA
	8 ft	CT8-BA
	12 ft	CT12-BA
CS TopMountTrack - Double 1-3/8" door thickness	6 ft	TSTM2-138-6
	8 ft	TSTM2-138-8
CS TopMountTrack - Double 1-3/4" door thickness	6 ft	TSTM2-134-6
	8 ft	TSTM2-134-8
CS TopMountTrack - Triple 1-3/8" door thickness	8 ft	TSTM3-138-8
CS TopMountTrack - Triple 1-3/4" door thickness	8 ft	TSTM3-134-8

CL400 Magnetic

Patented magnetic pocket door handle that features a magnetic catch and plunger system.



Design Features & Options

- Configurations include Passage, Privacy, Key Locking, Bi-Parting
- Design ensures that the doors slides flush back into the pocket
- Suitable for doors 1-3/8" and 1-3/4" thick

Function	Door Thickness	Finish	CS SKU
Passage (Blank/Blank)	1-3/8"	Satin Nickel	CL400A0328
		Matte Black	CL400A0428
	1-3/4"	Satin Nickel	CL400A0329
		Matte Black	CL400A0429
Privacy (LH Emergency/ Snib RH)	1-3/8"	Satin Nickel	CL400B0328
		Matte Black	CL400B0428
	1-3/4"	Satin Nickel	CL400B0333
		Matte Black	CL400B0433
Privacy (LH Snib/ Emergency RH)	1-3/8"	Satin Nickel	CL400B0329
		Matte Black	CL400B0429
	1-3/4"	Satin Nickel	CL400B0334
		Matte Black	CL400B0434

PART# CSBOOK26
VERSION 1.0.0

REIB
an **SBP** brand

Reeb® Millwork
reeb.com

BETHLEHEM, PA
1000 Maloney Circle
Bethlehem, PA 18015
Phone: (800) 862-8622
Fax: (800) 772-7332

BARCLAY, MD
1315 Goldsboro Rd.
Barclay, MD 21607
Phone: (800) 825-8331
Fax: (800) 331-9387

MOCKSVILLE, NC
346 Bethel Church Rd.
Mocksville, NC 27028
Phone: (800) 642-0886
Fax: (800) 618-0620

PROVIDENCE, RI
19 Business Park Dr.
Smithfield, RI 02917
Phone: (800) 343-5703
Fax: (800) 388-5979

SYRACUSE, NY
7475 Henry Clay Blvd.
Liverpool, NY 13088
Phone: (800) 422-5224
Fax: (800) 531-7332

Cavity Sliders™

CavitySliders.com

(888) 466-0030

sales@cavitysliders.com